

2022

On Rhine and Neckar



With Bike and Barge from Koblenz to Bad Wimpfen

MS PATRIA

ORIGINALREISE

- Trip length: 8 Days / 7 Nights
- Departure and arrival day: Saturday
- Length of cycle tours: approx. 199 - 211 km
- Character: individual, unguided
- Difficulty: ●○○○
- Profile: Most of the stretches are paved or asphalted, and lead alongside the Rhine dikes without any gradients of note. This makes the trip suitable even for unpractised cyclist.
- Language on board: German / English
- Travel documents: German / English
- Booking code DE-RHSKB-081



SE-Tours GmbH | Am Grollhamm 12a | 27574 Bremerhaven | Tel +49 471-800735 | info@se-tours.de
www.se-tours.de |   Follow us now on [Facebook](#) and [Instagram](#)!

Tour Details

Is the Neckar more picturesque at Marbach, the birthplace of the writer and poet Schiller, or perhaps at the Odenwald, which the river flows through? Maybe you prefer "Father Rhine", which is associated with the famous Nibelungen saga, the Lorely rock, and numerous museums in Mainz or the famous city of Heidelberg? After you have returned home, you will enjoy browsing your photos: of course Heidelberg with its magnificent Castle, the narrow streets of the old town centers of Eberbach and Koblenz, which are just a few of the highlights of this trip along the Rhine and the Neckar. Every photo revives your pleasant memories. What more could you expect from such a wonderful trip? The quality of cycling tracks is very good: usually you will cycle on paved tracks along the rivers without any gradients of note. This makes the trip also suitable for relatively unpractised cyclists. You will live and travel on board the MS PATRIA, which has been a favourite ship for bike-boat holidays for many years.

(All times are subject to change)

Day	Port	Arrival	Dept.
Day 1	Koblenz, Embarkation		
Day 2	Koblenz		08:00
Day 2	Boppard	10:00	10:30
Day 2	Rüdesheim	15:00	
Day 3	Rüdesheim		11:00
Day 3	Mainz	13:00	
Day 4	Mainz		10:30
Day 4	Nierstein	13:00	
Day 5	Nierstein		07:00
Day 5	Mannheim	12:00	12:30
Day 5	Heidelberg	14:30	
Day 6	Heidelberg		09:45
Day 6	Eberbach	14:00	
Day 7	Eberbach		09:45
Day 7	Bad Wimpfen	14:00	
Day 8	Bad Wimpfen, Disembarkation		

Day 1: Arrival to Koblenz

Embarkation between 2:00 pm and 4:00 pm, the crew will welcome you on board. You will spend the evening and first night in Koblenz.

Day 2: Boat tour Koblenz – Boppard | Boppard – Rüdesheim, Cycle tour approx. 46 km

You sail by barge upstream the river Rhine from Koblenz to Boppard. Enjoy the panoramic view of the unforgettable Upper Middle Rhine Valley, a UNESCO World Heritage site. From there you cycle on the left river bank via castles and burgs alongside the celebrated Rock of Lorelei to the beautiful and famous city of Rüdesheim. Overnight stay in Rüdesheim or in Bingen.

Day 3: Rüdesheim – Mainz, Cycle tour approx. 32 - 35 km

The many picturesque houses and the beautiful landscape along the way from Rüdesheim to Mainz make your bike tour an experience. Mainz has numerous churches, museums and historical monuments, e.g. the Cathedral or the Electors Palace, one of the most magnificent of the residences on the Middle Rhine.

Day 4: Mainz – Nierstein, Cycle tour approx. 17 - 26 km

You cycle via Laubenheim to Nierstein, the biggest vine growing community on the river Rhine, where you will enjoy your lunch on board. Nierstein is a popular destination for exploring the vineyards with a tractor wagon.

Day 5: Boat tour Nierstein – Mannheim | Mannheim – Heidelberg, Cycle tour approx. 25 km

By ship to Mannheim. From there on you will cycle via the Celtic city of Ladenburg, where you reach the river Neckar for the first time, to Heidelberg. This old city draws tourists from all over the world. Visit the castle and explore the old town on your own.

Day 6: Heidelberg – Eberbach, Cycle tour approx. 34 km

After bike tour from Heidelberg via Ziegelhausen and through the Odenwald to Neckarsteinach you will reach picturesque Eberbach, a nice old town with narrow streets.

Day 7: Eberbach – Bad Wimpfen, Cycle tour approx. 45 km

The first stop of today's bike tour is Burg Hornsberg in Neckarzimmern. Bad Wimpfen, the last destination of this tour, looks like a dream village of the middle Ages.

Day 8: Departure from Bad Wimpfen

After breakfast disembarkation until 9:00 am. Individual journey home.



Travel Dates | Prices | Services

Travel Dates 2022 / From Saturday to Saturday

Season A: 14. May – 21. May

Season B: 09. July – 16. July | 03. Sept. – 10. Sept.

Price per Person in EURO

	Main Deck		Upper Deck	
	2-bed-cabin	2-bed cabin single use	2-bed-cabin	2-bed cabin single use
Season A	799.-	1,149.-	899.-	1,299.-
Season B	949.-	1,299.-	1,049.-	1,449.-

Supplements

Rental bike fee 7-gear-Unisex: € 75.-

Rental bike fee 8-gear-E-bike: € 165.-

Bikes:

- 7-gear-Unisex-trekking bikes and 8-gear-E-Bikes (brand: Velo de Ville - special SE-Tours edition)
- With hand brake and pedal brake or hand brakes only (subject to availability, please indicate as a non-binding customer request by the booking)
- Pannier bag and rental bike insurance included
- E-Bikes on a limited number only
- Please indicate your body height by the booking

Travel safe and secure with SE-Tours: We recommend to wear a bike helmet. Onboard Selling: UVEX I-VO € 40.00 per helmet, limited number.

Services included

- Seven nights in outside cabins with private facilities in the booked cabin category
- Program according to routing
- All charges for harbours, bridges and locks
- Welcome-Drink
- Room cleaning every day, changing of towels and bed cloths as necessary
- Full board consisting of 7x breakfast, 6x lunch package for cycle tours or snack on board (non-cyclists), 6x coffee or tea in the afternoon, 7x 3-course-dinner
- Daily meeting for the cycle tours
- Printed instructions and maps for daily individual bike tours (1 per cabin)
- GPS tracks for cycle tours
- Tour guide on board

Not included

Arrival and departure, parking fees and shuttles, bike rentals, entrance fees and excursions, city maps, ferry fees, travel insurances, tips, drinks on board and personal expenses.

Passenger car parking options in Koblenz (subject to change, effective April 2021):

Public parking garage near the pier in Koblenz from approx. € 125/week and free commuter parking outside. From there you can take the public bus into the city. No reservation possible.

Return to Koblenz

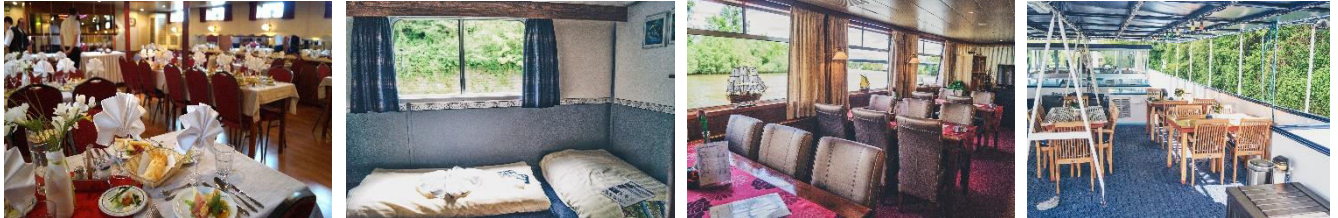
By train from Bad Wimpfen to Koblenz in 3.5 hours, approx. € 45.- per person.

Ship's description | Remarks

MS PATRIA

Registry Netherlands | **Length** 68 m | **Width** 7.7 m | **Draft** 1.85 m | **Number of Crew** ca.12 | **Passengers** max. 68

On the Neckar and Rhine, the 68 meters long MS PATRIA, which can accommodate a max. of 68 guests, is your sailing home. The ship is modernized for boat bike tours and has a nice salon with bar and large windows in front of the top deck and a separate restaurant on the main deck (air-conditioned). On the partially covered sun deck there are sitting places (tables and chairs) for all guests and a cycle shed. The ship sails under Dutch Flag and had its sailing area in the Netherlands for many years. As from 2011 its sailing area is in Germany and it is a very popular ship for combined boat and bike tours.



Cabins 34 outer cabins, only 2-bed-cabins (approx. 7 m², two single beds standing in a right angle) with shower/toilet.

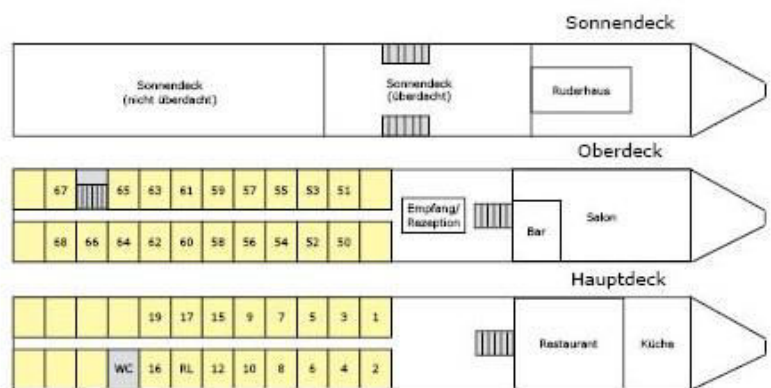
Main Deck 15 cabins with individually regulates air conditioning (windows are fixed for safety reasons)

Upper Deck 19 cabins (no air conditioning, windows can be opened).

Important remarks

Due to the current COVID-19 pandemic, there may be restrictions on board. These are temporary, government-mandated restrictions that may vary regionally. For the safety of all persons present on board, you are obliged to wear a mouth and nose protector and to observe the rules of distance and hygiene. For this purpose, you will receive our ship-specific hygiene concept when booking/inquiring.

MS PATRIA



Embarkation at 2:00 p.m., stay on board from 4:00 p.m. | **Disembarkation** until 9:00 a.m.

Minimum number of participants 45 guests (must have been reached within 21 days prior to departure).

To bring your own bike On request only – due to lack of space on sun deck.

Excursions We offer a small excursion program, that can be booked directly on board at the cruise director only. You will get a brief description together with your travel documents. Depending on the number of participants some excursions could be carried out in 2 languages (German/ English).

Schedule and program changes Basically, we reserve the right to make changes of routing and program. If there is low or high water and a route cannot be shipped, the captain reserves the right to change the route in view of your safety (this cannot be accepted as a reason for free withdrawal). Same applies to previously unknown administrative orders of lock or bridge repairs.

Travel documents EU-citizens (without special situations like dual citizenship, main residence abroad or a limited-validity passport) are required to have a valid passport or ID-card, not expiring within six (6) months of the return of your cruise. We kindly ask non-EU citizens, EU-nationals with multiple citizenship or anybody who has to respect special legal entry requirements for the country to visit, to inform about visa and entry documents at the competent embassy.

This trip is not suitable for guests with reduced mobility.

We recommend that you take out a **travel health insurance** with repatriation coverage as well as baggage, accident and travel cancellation insurances.