

2022

# Beautiful river valleys and vineyards on Saar and Moselle

With Bike and Barge from Saarburg to Koblenz

MS PATRIA

ORIGINALREISE

- Trip length: 8 Days / 7 Nights
- Departure and arrival day: Saturday
- Length of cycle tours: approx. 246 km
- Character: individual, unguided
- Difficulty: ●○○○
- Profile: Most of the stretches are paved or asphalted without any gradients of note. This makes the trip suitable even for unpractised cyclist.
- Language on board: German / English
- Travel documents: German / English
- Booking code DE-MOSSK-081



SE-Tours GmbH | Am Grollhamm 12a | 27574 Bremerhaven | Tel +49 471-800735 | [info@se-tours.de](mailto:info@se-tours.de)

[www.se-tours.de](http://www.se-tours.de)



Follow us now on [Facebook](#) and [Instagram](#)!

## Tour Details

The history of this region even goes back to the Roman Era, some 2.000 years ago. Beautiful timbered houses, vineyards, the Porta Nigra in Trier, the “German corner” (conjunction of Moselle and Rhine) in Koblenz and Saarburg (also known as “little Venice”) are but a few of the highlights during this trip. The Moselle, with a length of 544 km, is the Rhine’s longest tributary and it is also the second most important shipping route in Germany. The Saar, which has the greatest abundance of water and a length of 246 km, is the Moselle’s longest tributary. The quality of the cycle paths along this route is excellent. Most of the path along the Moselle is paved or asphalted and does not have any gradients of note. This makes the trip suitable even for relatively unpractised cyclists.

(All times are subject to change)

Day	Port	Arrival	Dept.
Day 1	Saarburg, Embarkation		
Day 2	Saarburg		10:30
Day 2	Trier	13:00	
Day 3	Trier		10:00
Day 3	Mehring	12:30	
Day 4	Mehring		09:45
Day 4	Bernkastel-Kues	14:00	
Day 5	Bernkastel-Kues		09:45
Day 5	Zell	14:00	
Day 6	Zell		10:30
Day 6	Cochem	14:00	
Day 7	Cochem		09:00
Day 7	Koblenz	15:30	
Day 8	Koblenz, Disembarkation		

### Day 1: Arrival to Saarburg

Embarkation between 2 pm and 4 pm. You will spend the first night and evening in Saarburg. In its centre you will find a waterfall of 20 meters deep as well as many baroque buildings and fisher houses.

### Day 2: Saarburg – Wasserbillig (Luxemburg) – Trier, Cycle tour approx. 38 km

Today you will cycle from Saarburg along the idyllic nature reserve of the abandoned meander of the River Saar. Further on to Wasserbillig in Luxemburg and from here to the Igeler Säule. Later you will reach Trier, where MS PATRIA is already waiting for you.

### Day 3: Trier – Mehring, Cycle tour approx. 26-29 km

After breakfast you will cycle via Pfalzel to Mehring, the largest wine-growers’ community in the Mosel-Saar-Ruwer region.

### Day 4: Mehring – Piesport – Bernkastel-Kues, Cycle tour approx. 47 km

Today you will reach Bernkastel-Kues by bike. The market place from the Middle Ages with many wood timbered houses invites you for a rest. On your way you visit Neumagen-Dhron which is the oldest wine city of Germany. Further on you reach Piesport, the oldest wine growing community along the Moselle. You should take the time to enjoy the popular wines.

### Day 5: Bernkastel-Kues – Traben-Trarbach – Zell on the Moselle, Cycle tour approx. 43 km

Today’s bike tour brings you to romantic Traben-Trarbach, where Jugendstil architecture shows its best side. Continuing to Zell, well known wine village on the Moselle. In the evening you will have the chance to visit a local winegrowers place and enjoy a wine tasting with the famous Moselle wines (optional, bookable on board).

### Day 6: Zell on the Moselle – Beilstein – Cochem, Cycle tour approx. 39 km

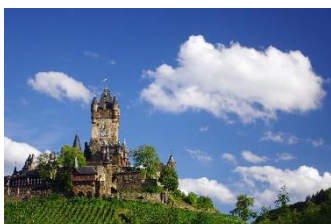
The perfect maintained historical centre of Beilstein, “the Sleeping Beauty of the Mosel”, is waiting for you. Today’s tour ends in Cochem with the Reichsburg. Cochem is a lovely little town with historical half-timbered-houses and a picturesque Old town.

### Day 7: Boat tour Cochem – Koblenz, day of rest on board | alternative Cochem – Alken – Koblenz, Cycle tour approx. 50 km

Today you can spend the day on board and relax on the sundeck. Enjoy the beautiful Moselle landscape passing by and stroll along the “Deutsche Eck” in Koblenz in the afternoon, where Moselle and Rhine flow together. Experienced cyclist can cycle from Cochem to Koblenz and visit Burg Eltz.

### Day 8: Departure from Koblenz

Disembarkation after breakfast until 9:00 am. Individual journey home.



# Travel Dates | Prices | Services

## Travel Dates 2022 / From Saturday to Saturday

**Season A:** 08. Oct. – 15. Oct. | 22. Oct. - 29. Oct.

**Season B:** 07. May - 14. May

**Season C:** 04. June – 11. June | 18. June – 25. June | 02. July – 09. July | 30. July – 06. Aug. | 13. Aug. – 20. Aug. | 27. Aug. – 03. Sept. | 24. Sept. – 01. Oct.

## Price per Person in EURO

	Main Deck		Upper Deck	
	2-bed-cabin	2-bed cabin single use	2-bed-cabin	2-bed cabin single use
<b>Saison A</b>	649,-	949,-	749,-	1.099,-
<b>Saison B</b>	699,-	999,-	799,-	1.149,-
<b>Saison C</b>	949,-	1.299,-	1.049,-	1.449,-

## Supplements

**Rental bike fee 7-gear-Unisex:** € 75.-

**Rental bike fee 8-gear-E-bike:** € 165.-

### Bikes:

- 7-gear-Unisex-trekking bikes and 8-gear-E-Bikes (brand: Velo de Ville - special SE-Tours edition)
- With hand brake and pedal brake or hand brakes only (subject to availability, please indicate as a non-binding customer request by the booking)
- Pannier bag and rental bike insurance included
- E-Bikes on a limited number only
- Please indicate your body height by the booking

**Travel safe and secure with SE-Tours:** We recommend to wear a bike helmet. Onboard Selling: UVEX I-VO € 40.00 per helmet, limited number.

## Services included

- Seven nights in outside cabins with private facilities in the booked cabin category
- Program according to routing
- All charges for harbours, bridges and locks
- Welcome-Drink
- Room cleaning every day, changing of towels and bed cloths as necessary
- Full board consisting of 7x breakfast, 6x lunch package for cycle tours or snack on board (non-cyclists), 6x coffee or tea in the afternoon, 7x 3-course-dinner
- Daily meeting for the cycle tours
- Printed instructions and maps for daily individual bike tours (1 per cabin)
- GPS tracks for cycle tours
- Tour guide on board

## Not included

Arrival and departure, parking fees and shuttles, bike rentals, entrance fees and excursions, city maps, ferry fees, travel insurances, tips, drinks on board and personal expenses.

Passenger car parking options in Saarburg (subject to change, effective April 2021):

Parking near the pier in Saarburg (unguarded, not reservable). Costs approx. € 25.- per week.

## Return to Saarburg

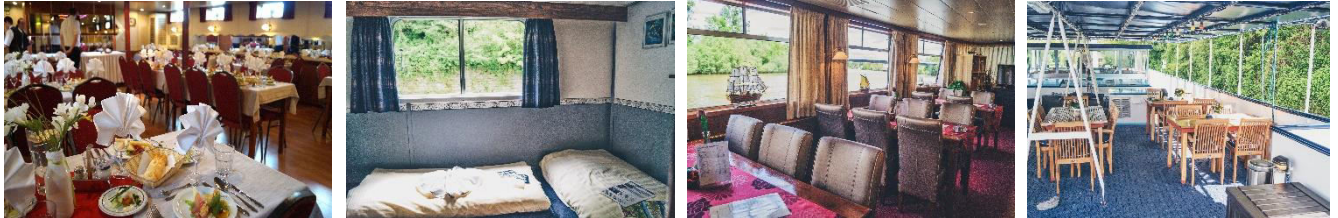
By train from Koblenz to Saarburg in 2 hours, approx. € 24.- per person.

# Ship's description | Remarks

## MS PATRIA

**Registry** Netherlands | **Length** 68 m | **Width** 7.7 m | **Draft** 1.85 m | **Number of Crew** ca.12 | **Passengers** max. 68

On the Neckar and Rhine, the 68 meters long MS PATRIA, which can accommodate a max. of 68 guests, is your sailing home. The ship is modernized for boat bike tours and has a nice salon with bar and large windows in front of the top deck and a separate restaurant on the main deck (air-conditioned). On the partially covered sun deck there are sitting places (tables and chairs) for all guests and a cycle shed. The ship sails under Dutch Flag and had its sailing area in the Netherlands for many years. As from 2011 its sailing area is in Germany and it is a very popular ship for combined boat and bike tours.



**Cabins** 34 outer cabins, only 2-bed-cabins (approx. 7 m<sup>2</sup>, two single beds standing in a right angle) with shower/toilet.

**Main Deck** 15 cabins with individually regulates air conditioning (windows are fixed for safety reasons)

**Upper Deck** 19 cabins (no air conditioning, windows can be opened).

### Important remarks

*Due to the current COVID-19 pandemic, there may be restrictions on board. These are temporary, government-mandated restrictions that may vary regionally. For the safety of all persons present on board, you are obliged to wear a mouth and nose protector and to observe the rules of distance and hygiene. For this purpose, you will receive our ship-specific hygiene concept when booking/inquiring.*

*Due to the current COVID-19 pandemic, there may be restrictions on board. These are temporary, government-mandated restrictions that may vary regionally. For the safety of all persons present on board, you are obliged to wear a mouth and nose protector and to observe the rules of distance and hygiene. For this purpose, you will receive our ship-specific hygiene concept when booking/inquiring.*

**Embarkation** at 2:00 p.m., stay on board from 4:00 p.m. | **Disembarkation** until 9:00 a.m.

**Minimum number of participants** 45 guests (must have been reached within 21 days prior to departure).

**To bring your own bike** On request only – due to lack of space on sun deck.

**Excursions** We offer a small excursion program, that can be booked directly on board at the cruise director only. You will get a brief description together with your travel documents. Depending on the number of participants some excursions could be carried out in 2 languages (German/ English).

**Schedule and program changes** Basically, we reserve the right to make changes of routing and program. If there is low or high water and a route cannot be shipped, the captain reserves the right to change the route in view of your safety (this cannot be accepted as a reason for free withdrawal). Same applies to previously unknown administrative orders of lock or bridge repairs.

**Travel documents** EU-citizens (without special situations like dual citizenship, main residence abroad or a limited-validity passport) are required to have a valid passport or ID-card, not expiring within six (6) months of the return of your cruise. We kindly ask non-EU citizens, EU-nationals with multiple citizenship or anybody who has to respect special legal entry requirements for the country to visit, to inform about visa and entry documents at the competent embassy.

**This trip is not suitable for guests with reduced mobility.**

We recommend that you take out a **travel health insurance** with repatriation coverage as well as baggage, accident and travel cancellation insurances.

MS PATRIA

