

2025

Picturesque harbour towns on the IJsselmeer Dunes and North Sea beaches

North of Holland and Friesland by Bike and Boat from/to Enkhuizen



MS RIGOLETTO

ORIGINALREISE

- Trip length: 8 Days / 7 Nights
- Departure and arrival day: Saturday
- Length of cycle tours: approx . 207 – 264 km
- Character of cycle tours: individual, unguided
- Difficulty: ●○○○
- Profile: Nearly all cycle tours can be classified as being easy
- Languages on board: German/English
- Travel documents: German/English
- Booking code: NL-NHSNR-08I



SE-Tours GmbH | Am Grollhamm 12a | 27574 Bremerhaven | Tel +49 471-800735 | info@se-tours.de

www.se-tours.de |   Follow us now on [Facebook](#) and [Instagram](#)!

Tour Details

Flat countryside up to the horizon, windmills, canals (Grachten) and cycling, that are the Netherlands. And there is so much more. Discover the Netherlands in a unique way on an 8-days-journey by bike and boat. Well-built cycle paths as well as wide and extensive waterways guarantee an unforgettable holiday.

The Province of the Northern Netherlands: The Dutch province of the North Netherlands is situated on a peninsula between the North Sea and the IJsselmeer (IJssel Sea). The Northern Netherlands were founded due to the separation of the north and south of the Netherlands in 1840. Discover the folklore and tradition in the flat Polderland, on the North Sea and in romantic ports. You are travelling through a former lake and marsh region that has been drained by the help of windmills since the 17th century. Experience varying, typically Dutch Polder-countryside, dunes and North Sea beaches, the North Sea island Texel and many picturesque harbour villages on the coast of the IJsselmeer.

The province of Friesland, with its unique lake landscape, numerous rivers and canals, is a true paradise for cyclists. The tranquillity and vastness of nature is omnipresent and perfect for a bike & boat experience.

(All times are subject to change)

Day	Port	Arrival	Dept.
Day 1	Enkhuizen, Embarkation	16:00 h	
Day 2	Enkhuizen		12:00
Day 2	Hoorn	14:30	
Day 3	Hoorn		05:00
Day 3	Lemmer	10:00	
Day 4	Lemmer		12:00
Day 4	Stavoren	14:30	15:00
Day 4	Harlingen	20:00	
Day 5	Harlingen		16:00
Day 5	Oudeschild (Texel)	20:00	
Day 6	Oudeschild (Texel)		17:00
Day 6	Den Helder	20:00	
Day 7	Den Helder		09:30
Day 7	Medemblik	15:00	19:00
Day 7	Enkhuizen	20:30	
Day 8	Enkhuizen	Disembarkation	

1st Day: Individual arrival at Enkhuizen

Check-in on board in the afternoon. Perhaps you take a first short walk through the pretty harbour town with its charming old town.

2nd Day: Cycling from Enkhuizen to Hoorn, cycle tour: approx. 20 - 26 km

Begin your day by discovering the pretty harbour town on the banks of the IJsselmeer. The rich history of the city can still be felt during a walk through the old town with its numerous villas, canals, churches, city walls and ports. Tip: You should visit the Zuiderzeemuseum. You then set off on your first cycle tour to Hoorn. Look forward to the historic old town with its many buildings from the 17th century (e.g. the harbour tower as well as the storage houses at the old quai).

3rd Day: Shipping from Hoorn to Lemmer – Cycling from Lemmer and back, cycle tour: approx. 33 - 44 km

In the morning you are shipping across the IJsselmeer to Lemmer in the province of Friesland. Lemmer is known for its historic old town and pretty gabled houses. Start your

roundtrip by bike via Oosterzee Buren to the Tjeukemeer and via Munnekeburen, Scherpenzeel and Schoterzijl back to Lemmer. The longer tour also takes you around the Rottige Meenthe and Brandemeer nature reserve. Tip: Visit the largest steam pumping station in the world, "Woudagemaal", which is still in operation.

4th Day: Cycling from Lemmer to Stavoren, Cycle tour: approx. 32 - 41 km – Shipping from Stavoren to Harlingen

You are going by bike to Sondeler Leien Lake, from there through the woods of Rijsterbos passing the Mokkebank (a birds' reservation) to the Roode Klif at Stavoren. From there you are shipping to Harlingen. The Frisian town is known for its magnificent warehouses and patrician homes, canals and bridges, for its tidal harbour Noorderhaven and for its many café terraces and stores.

5th Day: Cycling from Harlingen and back, cycle tour: approx. 40 - 50 km – Shipping from Harlingen to Oudeschild (Island of Texel)

Another varied cycle tour around Harlingen is waiting for you. Enjoy the sweeping views and the beautiful nature of the province of Friesland. At around 16:00, your ship departs and you cross over to the North Sea island of Texel.

6th Day: Island of Texel - Cycle tour from Oudeschild and back, cycle tour: approx. 29 - 49 km, Shipping from Oudeschild to Den Helder

You are going on a round trip by bike on the biggest North Sea Island of the Netherlands – Texel. There are numerous alternative routes 28/35/48. About 5:00 pm shipping to Den Helder.

7th Day: Cycling from Den Helder to Medemblik, cycle tour: approx. 55 km – Shipping from Medemblik to Enkhuizen

You cycle south through the dunes to Callantshoeg with one of the most beautiful beaches in the Netherlands. Then you turn eastwards via the picturesque dyke village of Oudesluis, which was once a landing place for the ships of the Dutch East India Company, and Kolhorn, formerly also a port on the Zuiderzee and now surrounded by meadows, to Medemblik, the oldest town in West Friesland and the IJsselmeer with a beautiful town center and many cosy restaurants and cafés.

8th Day: Enkhuizen

Checkout until 9:00 am and we are saying goodbye – have a safe journey.



Travel Dates | Prices | Services

Travel Dates 2025 / From Saturday to Saturday

Season A: 04Oct – 11Oct

Season B: 12Apr – 19Apr | 20Sep – 27Sep | 27Sep – 04Oct

Season C: 19Apr – 26Apr | 26Apr – 03May | 06Sep – 13Sep | 13Sep – 20Sep

Season D: 03 May – 10May | 10May – 17May | 17May – 24May | 24May – 31May | 31May – 07Jun | 07Jun – 14Jun | 14Jun – 21Jun | 21Jun – 28Jun | 28Jun – 05July | 05July – 12July | 12July – 19July | 19July – 26July | 26July – 02Aug | 02 Aug – 09Aug | 09Aug – 16Aug | 16Aug – 23Aug | 23Aug – 30Aug | 30Aug – 06Sep

Prices per person in Euro

	Main Deck		Upper Deck		
	2-bed-cabin	2-bed-cabin	Junior suite	3-bed-cabin	1-bed-cabin
Season A	799.-	949.-	1.199.-	849.-	1.249.-
Season B	899.-	1.049.-	1.299.-	949.-	1.349.-
Season C	999.-	1.149.-	1.399.-	1.049.-	1.449.-
Season D	1.149.-	1.299.-	1.549.-	1.199.-	1.649.-

Supplements

Child reduction: till 13 years 20% in a triple cabin with 2 adults

2-bed cabin for single use: 40% (limited quantity)

Rental bike fee 7-gear-Unisex: € 89.-

Rental bike fee 8-gear-E-Bike: € 199.-

Bring your own bike / own E-bike: € 39.- (on request only, limited number)

Bikes:

- 7-gear-Unisex-trekking bikes und 8-gear-E-Bikes (brand: Velo de Ville - special SE-Tours edition)
- With hand brake and pedal brake or hand brakes only (subject to availability, please indicate as a non-binding customer request by the booking)
- Pannier bag and rental bike insurance included.
- E-Bikes on a limited number only
- Please indicate your body height by the booking

Travel safe and secure with SE-Tours:

We recommend to wear a bike helmet. Onboard Selling: UVEX I-VO € 40.- per helmet, limited number.

Services included

- Seven nights in outside cabins with private facilities in the booked cabin category
- Program according to routing from/to Enkhuizen
- All charges for harbours, bridges and locks
- Room cleaning every day, changing of towels and bed cloths as necessary
- Welcome-Drink
- Full board consisting of 7x breakfast, 6x lunch snack on board (non-cyclists) or lunch package for cycle tours, 7x 3-course-dinner
- Coffee and tea facilities (24h)
- Daily meeting for the cycle tours
- Printed instructions and detailed maps for daily individual bike tours (1 per cabin)
- GPS tracks
- Onboard tour guide

Not included

Journey to and from Enkhuizen, shuttles, bike rentals, entrance fees and excursions, city maps, ferry fees, travel insurances, parking fees, tips, drinks on board.

Passenger car parking options in Enkhuizen (subject to change)

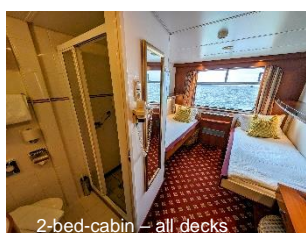
Free parking at the train station in Enkhuizen, located directly at the harbour, within walking distance of the berth. No reservation possible.

Ship's description | Remarks

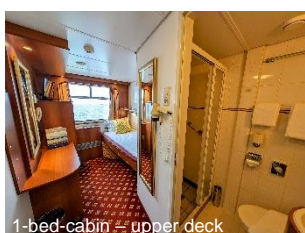
MS RIGOLETTO

Registry Switzerland | **Length** 105 m | **Width** 10,50 m | **Draft** 1,50 m | **Number of Crew** ca. 20 | **Passengers** max. 113

The MS RIGOLETTO is a very cozy and well-kept riverboat with a pleasant salon, bar, reception, on-board store, small library and restaurant where you can enjoy your meals. The appealing interior design is characterized by a tasteful colour scheme paired with wood and brass. Large panoramic windows in the lounge allow beautiful views of the passing landscapes. All public areas are air-conditioned. Partially covered sun deck with seating, outdoor bar and space for the bicycles.



2-bed-cabin – all decks



1-bed-cabin – upper deck



Junior suite – upper deck

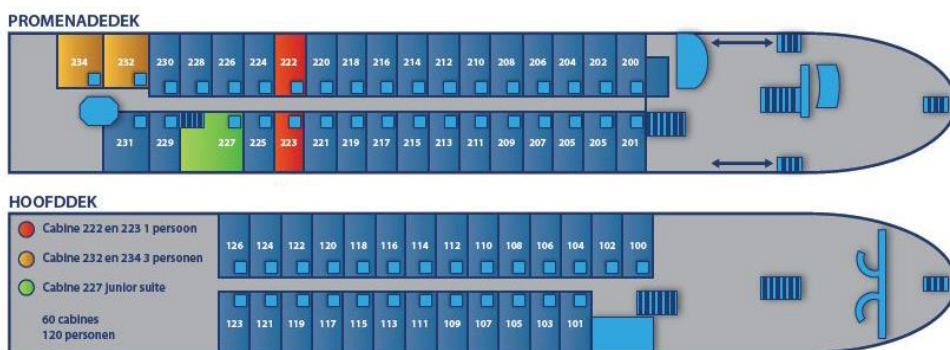


3-bed-cabin upper deck

Cabins: 57 all together, friendly and comfortably furnished with shower/WC, hairdryer, on-board telephone, TV/radio, safe and air conditioning. All cabins on both decks have a large panoramic window, of which the upper part can be opened.

25 x 2-bed-cabins on the main deck and 28 x 2-bed-cabins on the upper deck.

All 2-bed-cabins are approx. 11.5 m² in size and are equipped with two pullman beds (can be stowed away during the day for greater comfort on request). On the upper deck there are also 2 x 1-bed cabins (approx. 8 m²) with a pullman bed, 1 x 3-bed cabin (approx. 12 m²) with two foldaway beds and a pullman bed and 1 x junior suite (approx. 22 m²) with a double bed and a small seating area with two armchairs.



Important remarks

Embarkation From 4:00 pm | **Disembarkation** until 09:00 am.

Minimum number of participants 80 guests (must have been reached within 21 days prior to departure)

To bring your own bike On request only – due to lack of space on sun deck. E-bikes exclusively with removable battery pack. We exclude any liability for loss, theft and damage - this also applies to damage caused by transportation from shore to ship or vice versa. **Excursions** We offer a small excursion program, that can be booked directly on board at the cruise director only. You will get a brief description together with your travel documents. Depending on the number of participants some excursions could be carried out in 2 languages (German/ English).

Luggage We recommend: rainwear, bicycle helmet, sunhat and sneakers.

Schedule and program changes Basically, we reserve the right to make changes of routing and program. If there is low or high water and a route cannot be shipped, the captain reserves the right to change the route in view of your safety (this cannot be accepted as a reason for free withdrawal). Same applies to previously unknown administrative orders of lock or bridge repairs.

Travel documents EU-citizens (without special situations like dual citizenship, main residence abroad or a limited-validity passport) are required to have a valid passport or ID-card, not expiring within six (6) months of the return of your cruise. We kindly ask non-EU citizens, EU-nationals with multiple citizenship or anybody who has to respect special legal entry requirements for the country to visit, to inform about visa and entry documents at the competent embassy.

This trip is not suitable for guests with reduced mobility.

We recommend that you take out a **travel health insurance with repatriation coverage as well as baggage, accident and travel cancellation insurances.**