

2027

„The Danube in the rythm of the waltz“

Engelhartszell – Vienna – Engelhartszell by Bike & Boat



MS PRINZESSIN KATHARINA ****

ORIGINALREISE

- Trip length: 8 Days / 7 Nights
- Departure and arrival day: Saturday
- Length of cycle tours: approx. 194 - 208 km
- Character of cycle tours: individual, unguided
- Difficulty: ●○○○
- Profil: Nearly all cycle tours can be classified as being easy.
- Languages on board: German/English
- Travel documents: German/English
- Booking code: AT-DOSWK-08I



SE-Tours GmbH | Am Grollhamm 12a | 27574 Bremerhaven | Tel +49 471-800735 | info@se-tours.de

www.se-tours.de |   Follow us now on [Facebook](#) and [Instagram](#)!

Tour Details

The bike tour along the German / Austrian Danube is a great experience, because your "swimming hotel" is always with you! Gently downhill, you will cycle along lush green riverbanks, through small, dreamy villages in the impressive Danube landscapes. You will discover the breathtaking natural wonder of the "Great Loop" (a swift 180° turn!) and immerse yourself in legendary Wachau with its vineyard terraces and enchanted castles and monasteries. Then Vienna – an abundance of sights! A city, hardly to describe – you have to see and feel it! Sights like St. Stephen's Cathedral and the city hall are easy to reach during a wonderful sightseeing tour by bike. A stroll through the Naschmarkt (famous food market) is a wonderful cultural and culinary adventure. You can also relax at any of the cosy coffee houses or at a typical traditional Viennese wine tavern in the suburbs. The highlights of the tour: the Schloegen Danube Loop, the World Heritage Site Wachau, Upper Austria's capital Linz, the cosmopolitan city Vienna with a plethora of sights.

(All times are subject to change)

Day	Port	Arrival	Dept
Day 1	Engelhartszell, Embarkation 16:00 h	09:00	
Day 2	Engelhartszell		10:00
Day 2	Aschach	13:30	15:00
Day 2	Linz	18:00	22:00
Day 3	Tulln	09:00	10:00
Day 3	Vienna Nussdorf	13:00	
Day 4	Vienna Nussdorf		22:00
Day 5	Krems	08:00	09:30
Day 5	Melk	15:30	
Day 6	Melk		10:00
Day 6	Grein	15:00	
Day 7	Grein		10:00
Day 7	Mauthausen	14:00	19:00
Day 8	Engelhartszell, Disembarkation approx 09:30 h	09:00	

Day 1: Engelhartszell

Individual journey to Engelhartszell, known for its Trappist monastery and scenic natural surroundings, approx. 30 km/18,64 miles from Passau. Embarkation will be around 4:00 pm. Overnight in Engelhartszell.

Day 2: Engelhartszell – „Great Loop“ – Aschach, ca. 40 - 43 km. Shipping to Linz and Tulln

Need a boost? Try some of the special cordials and liqueurs in the Trappist monastery in Engelhartszell. Supposedly, they have "special healing power." Downstream, the way leads you to pretty villages amid natural landscape. For a change take the little ferry boat through the romantic Schlögener loop, where the river makes a very abrupt 180-degree turn (approx. € 7 per pers.). Shipping from Aschach to Linz and on to Tulln. Tip: discover Linz, the capital of upper Austria while riding on the bright yellow City-Express.

Day 3: Tulln – Vienna-Nussdorf, ca. 32 - 37 km

Right in front of Vienna's entrance, embedded in a breathtaking landscape, the monastery of Klosterneuburg is situated. You can already see the cupola of this 900-year-old baroque building from a distance. "Kahlenbergerdorf" with its wine taverns is definitely worth a visit. A short hike through the vineyards leads to the Kahlenberg viewing terrace, where you'll be rewarded with a stunning view of the vibrant metropolis below.

Day 4: Vienna-Nussdorf (day of rest)

You should be sure to see the most famous places of interest like the St. Stephens Cathedral and the Hofburg, the gorgeous boulevard "Ringstraße" with the Burgtheater, the State Opera House or the town hall that takes you back to the past. Take your time in the afternoon to stroll or visit one of the famous Viennese coffee bars. In the night shipping to Krems in the Wachau Valley.

Day 5: Krems – Melk, ca. 36 - 38 km

Look forward to a bike ride through one of the most beautiful river landscapes in Europe. The gently rolling hills of the Wachau Valley, with its picturesque villages, well-kept terraced vineyards, historic castles, monasteries, and romantic ruins, are sure to enchant you. In Dürnstein, the blue baroque tower of the abbey church greets you from afar. In Melk, the magnificent Benedictine Abbey towers above the Danube – a place full of history, culture, and impressive architecture. Enjoy this day with all your senses – it is one of the highlights of the journey.

Day 6: Melk – Grein, ca. 50 km

This stage leads you through charming river meadows with wide vistas and small, picturesque towns. The wild Strudengau region, once feared by shipmen, is now a scenic river gorge with forested slopes and rocky shores. In the idyllic town of Grein, you'll find Greinburg Castle towering above the Danube – the oldest residential castle in Austria, which you can explore on a guided tour.

Day 7: Grein – Mauthausen, cycling tour approx. 36 - 40 km, cruise to Engelhartszell

The vast plains of the Machland region accompany you with lush fields and peaceful paths. In the Celtic Village of Mitterkirchen, you can immerse yourself in a long-forgotten era. Upon arrival in Mauthausen, a visit to the memorial site of the former concentration camp is recommended – a place of quiet remembrance and historical responsibility. In the evening, a festive farewell dinner awaits you on board. Overnight cruise to Engelhartszell.

Day 8: Departure from Engelhartszell

Every journey draws to an end. Arrival in Engelhartszell is about 09:00 am, disembarkation half an hour later. We recommend to book train connections from Passau from approx. noon onwards.



Termine | Preise | Leistungen

Travel Dates 2027 / From Saturday to Saturday

Season A: 17Apr – 24Apr

Season B: 01May – 08May

Season C: 15May – 22May | 29May – 05Jun | 05Jun – 12Jun | 19Jun – 26Jun | 03Jul – 10Jul | 10Jul – 17Jul | 17Jul – 24Jul | 07Aug – 14Aug | 14Aug – 21Aug | 21Aug – 28Aug | 11Sep – 18Sep | 25Sep – 02Oct

Prices per person in Euro

	Main Deck			Upper Deck		
	2-bed Eco*	2-bed-cabin	1-bed cabin	3-bed-cabin	2-bed-cabin	1-bed-cabin
Season A	799.-	999.-	1.279.-	949.-	1.199.-	1.479.-
Season B	899.-	1.099.-	1.379.-	1.049.-	1.299.-	1.579.-
Season C	999.-	1.199.-	1.479.-	1.149.-	1.399.-	1.679.-

* Cabins in front and at rear of the ship; perceive engine and generator noise (when ship is in motion and in locks)

Supplements / Reductions

Child reduction: till 13 years 20% in a triple cabin with 2 adults

2-bed cabin for single use: 40% (limited quantity)

Rental bike fee 7-gear-Unisex: € 99.- bike insurance included

Rental bike fee 8-gear-E-Bike: € 219.- bike insurance included

Bring your own bike / own E-bike: € 59.- (on request only, limited number)

Bikes:

- 7-gear-Unisex-trekking bikes und 8-gear-E-Bikes (brand: Velo de Ville - special SE-Tours edition)
- With hand brake and pedal brake or hand brakes only (subject to availability, please indicate as a non-binding customer request by the booking)
- Pannier bag and rental bike insurance included.
- E-Bikes on a limited number only
- Please indicate your body height by the booking

Available on board (limited quantity):

- Bicycle helmet (UVEX I-VO): € 45.- per item
- Phone holder: € 10.- per item
- Power bank (10,000 mAh): € 20.- per item

Please note: In Austria, helmets are compulsory for children under the age of 13. If necessary, please bring your high-visibility vest from home.

Services included

- 7 nights in outside cabins with private facilities in the booked cabin category
- Programme according itinerary from/to Engelhartzell
- All passenger fees and port fees
- Captains greeting and Welcome-Drink
- Daily cabin cleaning. Changing of towels and bed cloths as necessary.
- Full meals: 7x breakfast, 6x packed lunch for cyclists or lunch snack on board (non cyclists), 6x afternoon coffee break, 6x 3-course-dinner and 1x farewell-dinner with farewell-drink
- Daily informational meeting
- Digital travel documents via GUIBO-App incl. GPS tracks for bike tours
- Tour guide on board

Services not included

Journey to and from Engelhartzell, shuttles, bike rental, entrance fees and excursions, city maps, ferry fees, travel insurances, parking fees, tips, drinks on board

Bus transfer Passau Main Station to Engelhartzell and return (no bicycle transportation): € 50.- per person (Departure from Passau Main Station around 4:00 p.m., return transfer from Engelhartzell after disembarkation)

Passenger car parking options in Engelhartzell

(Directly at the harbour and within walking distance of the mooring location, for 7 nights/8 days)

Parking lot – fenced, open-air area with video surveillance: € TBA

Private garage (also suitable for cars with a rear-mounted bike rack): € TBA

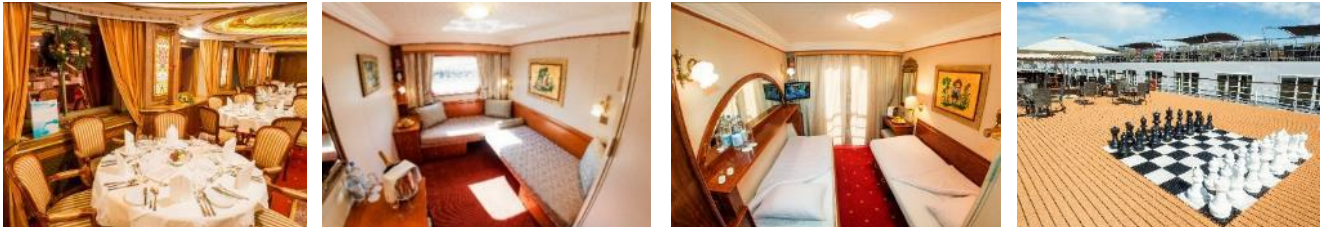
<https://www.se-tours.de/en/service/parking>

Ship's description | Remarks

MS PRINZESSIN KATHARINA

Year of construction 1990 | **Refurbishment** 2015 | **Registry** Slovakia | **Length** 110 m | **Width** 11,20 m | **Draft** 1 m | **Number of Crew** approx. 30 | **Passengers** max. 140

The comfortable MS Prinzessin Katharina provides the right ambience to make you feel at ease. On board the premium ship you can expect classic elegance, a tasteful interior and a friendly crew. Enjoy the special atmosphere and let yourself be spoiled by the good cuisine. On two passenger decks you will find a panoramic restaurant, a comfortable salon, one bar and an inviting foyer, a book corner, a small shop and a massage parlour. On the spacious, partly covered sun deck there are enough chairs available.



Cabins All 71 cabins are outside cabins and comfortably and tastefully furnished featuring en-suite facilities with shower/WC, hair dryer, air-conditioning, TV, on-board-radio, telephone and a small refrigerator.

Upper deck 29 two-bed cabins (approx. 11 m²), 1 triple cabin (approx. 11 m²) und 2 single cabins (approx. 9 m²); all cabins with French balcony (= floor-to-ceiling windows which can be opened). 2-bed cabins with a sofa bed and a pullman bed (upon request stowed during the day for more comfort). In the triple cabin a 3rd bed is folded down from the wall (max. 80 kg).

Main deck: 38 two-bed cabins, 1 single cabin (all cabins have approx. 11 m²) with two sofa beds standing in a right angle and a picture window (not to open). In some cabins in the front and rear part of the ship (category Eco) engine and generator noise may be perceptible.

Important remarks

Embarkation from 4 to 5 pm | **Disembarkation** approx 09:30 am. **Minimum number of participants** 80 guests (must have been reached within 21 days prior to departure)

To bring your own bike On request only – due to lack of space on sun deck. E-bikes exclusively with removable battery pack. We exclude any liability for loss, theft and damage - this also applies to damage caused by transportation from shore to ship or vice versa.

Excursions We offer a small excursion program, that can be booked directly on board at the cruise director only. You will get a brief description together with your travel documents. Depending on the number of participants some excursions could be carried out in 2 languages (German/ English).

Luggage We recommend rainwear, bicycle helmet, sunhat and sneakers. **Schedule and program changes**

Basically, we reserve the right to make changes of routing and program. In case of flood or low tide, the shipping company reserves the right to bridge parts of passages by buses. In extreme situations, the shipping company reserves the right to cancel the journey on short notice. No legal right shall be constituted of both situations. The same applies for officially ordered - previously not announced - repair work on locks or bridges. **Notes** Please be aware that a cruise ship on the Danube is not only your hotel but also a machine, working with engine power also during the night. Especially crossing locks and bridges - and the preparation work - may cause noise. If you are sensitive, please bring your own ear plugs

Digital Travel documents and roadmaps: In the interest of sustainability and climate protection, please choose our digital route book instead of printed travel documents. The GUIBO app is your constant companion during your SE-Tours original trip. A glance at your smartphone is enough to keep you safe and worry-free, with all the important information at hand. Travel information, ship and contact details and your bike tours are available digitally in the route book, available offline and thus accessible at any time. The app is available for free and works on all standard smartphones (except for Huawei devices). You will automatically receive the access data to download your booked trip via email before your journey begins. **Guibo App** To navigate safely throughout the day using the Guibo app, you will need a phone holder and a power bank to recharge your phone. If you do not bring these with you, both items are available for purchase on board in limited quantities. **Travel documents** EU-citizens (without special situations like dual citizenship, main residence abroad or a limited-validity passport) are required to have a valid passport or ID-card, not expiring within six (6) months of the return of your cruise. We kindly ask non-EU citizens, EU-nationals with multiple citizenship or anybody who must respect special legal entry requirements for the country to visit, to inform about visa and entry documents at the competent embassy. **This trip is not suitable for guests with reduced mobility.** We recommend that you take out a **travel health insurance with repatriation coverage as well as baggage, accident and travel cancellation insurances.**

